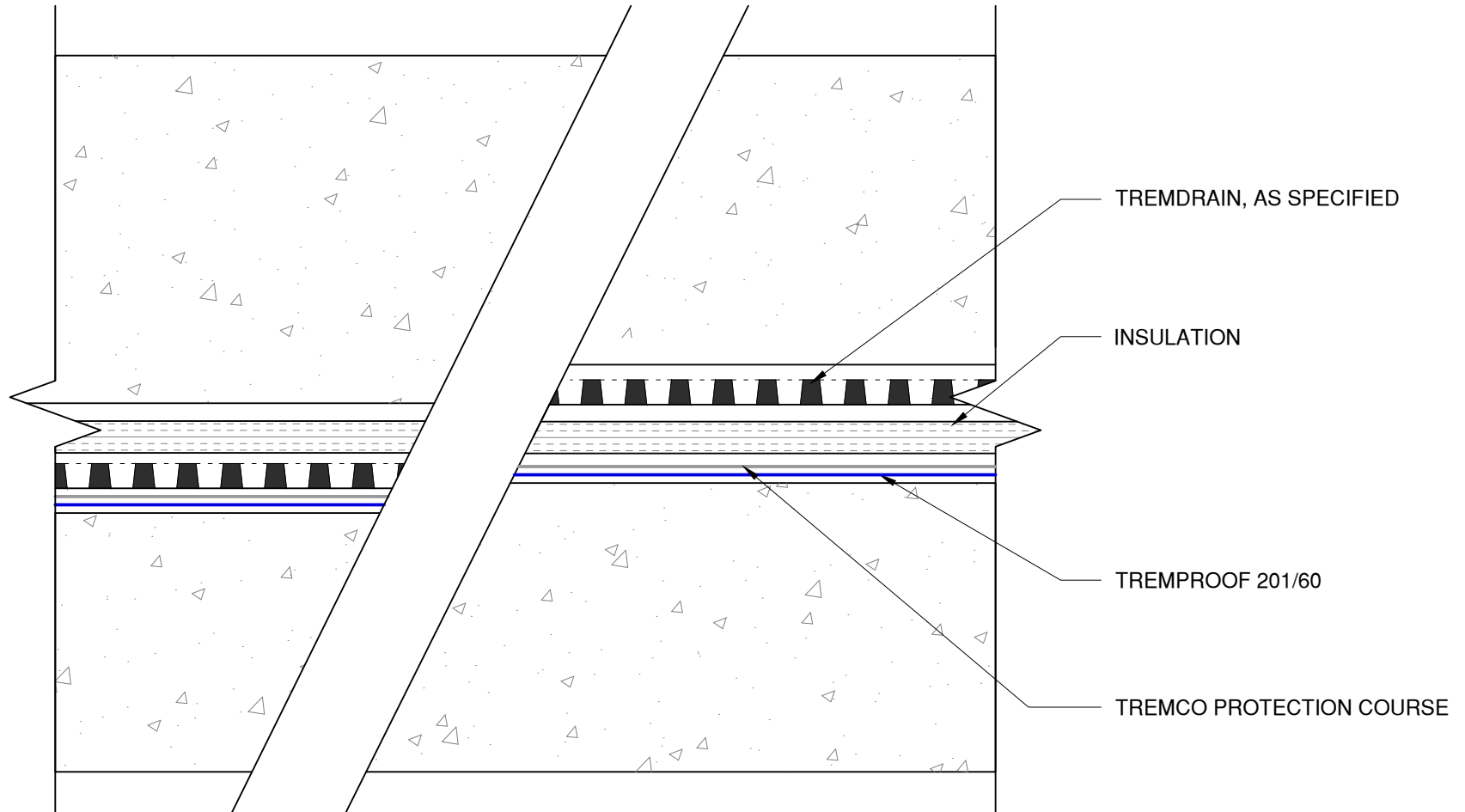


NOTE: INSULATION SHOULD NOT BE PLACED ONTO UNCURED MEMBRANE



The architecture, engineering, and design of the project using the Tremco products are the responsibility of the project's design professional. All products and systems must comply with local building codes and standards. This detail is for general information and guidance only and Tremco specifically disclaims any liability for the use of this detail. The project design professional determines, in its sole discretion, whether this detail or a functionally equivalent detail is best suited for the project. This detail is subject to change without notice. Contact Tremco to ensure you have the most recent version.

TREMproof 201/60



Detail: TREMproof 201/60 at Insulated Plaza with Poured Concrete

File Name:

Drawn by: KAB

Checked by: WH

Scale: NTS

Date: 3/4/2022

C-201 60-SS-02



Construction Products Group

Tremco Technical Support: 866-209-2404

www.tremcocpg.com